

QuantifiCare

LifeViz®
MICRO



THE POWER OF PRECISION IN A COMPACT DEVICE

The LifeViz® Micro system is ideal for assessing meticulous details of the skin.

Use as a stand-alone 3D camera for clinical trials or combine with 3D Track® software suite for research purposes.

Hand-held, wireless and non-contact

Move freely and save space in your lab with the 3D LifeViz® Micro's, portable and wireless design.

Sensors ranging from 12 to 24 megapixels

High sensitivity is paired with precision optics.

8μ precision

A validated and accurate system which measures up to 8μ precision.

7th
Anti-Aging
& Beauty
Trophy
2019-2020

A PORTABLE
3D SYSTEM FOR
SKIN MICROSTRUCTURE
ANALYSIS



Stereo-camera technology

Obtain greater image resolution with a greater order of magnitude of pixels than video camera based systems.

Reproducibility and standardized 3D images

Dual beam light pointers ensure increased image reproducibility for reliable comparisons of images.

RESULT-DRIVEN 3D DEVICE FOR MICRO SKIN ANALYSIS

Therapeutic Applications

- ☑ Cosmetics and plastic surgery: nasolabial folds, lips, fine wrinkles, pores, etc.
- ☑ Dermatology: basal cell carcinoma, acne lesions, scars (acne scars, keloids, etc.)
- ☑ Small wounds and burns



Wrinkles Before/After



FULLY PORTABLE
NON CONTACT



STANDARDIZED IMAGE
CAPTURE



ACCURATELY
QUANTIFY
CHANGES



www.quantificare.com

QUANTIFICARE S.A
(INTERNATIONAL)
PHONE: (+33) 4 92 91 54 20
Info@quantificare.com

QUANTIFICARE INC
(USA)
PHONE: (+1) 888 678 4450
Info.usa@quantificare.com

QUANTIFICARE DO BRAZIL
(LATAM)
PHONE: (+55) 44 3030 2500
Info.br@quantificare.com

QUANTIFICARE
(ASIA)
PHONE: (+63) 2 817 9867
Info.asia@quantificare.com

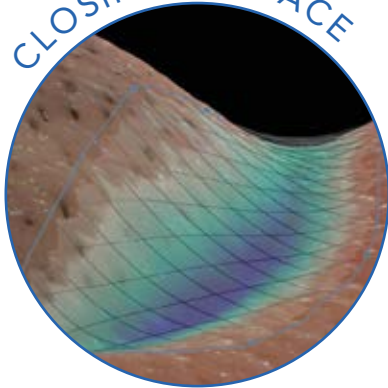
Visual Displays

CLAY SURFACE



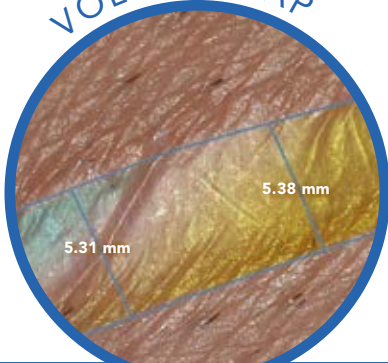
Crow's feet lines

CLOSING SURFACE



Nasolabial fold

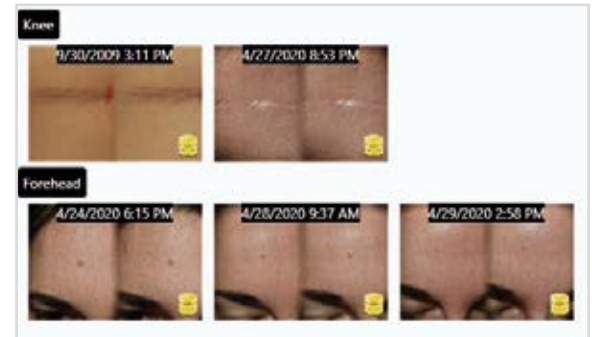
VOLUME MAP



Knee scar

IMAGE MANAGEMENT

Quickly **classify** and **organize** images by subject, visit and region of interest.



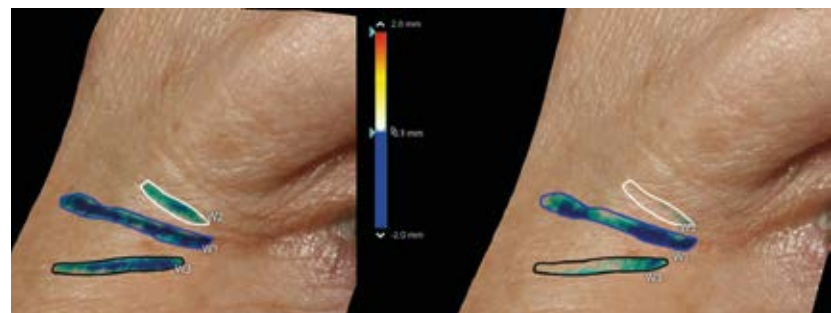
3D VISUALS

Strengthen product claims with 3D visuals, better illustrate treatment results. Assess the skin with an unrivaled level of quality.

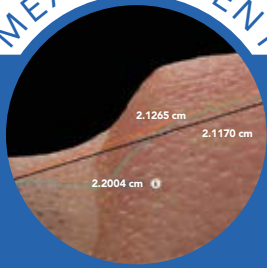
COLOR MAPPING

Visually display structural changes with colorimetric and topographic features.

Crow's feet lines



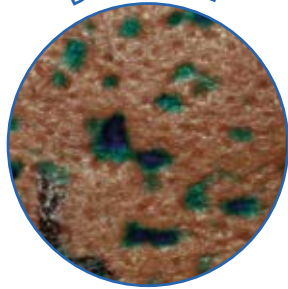
MEASUREMENT



Nasolabial fold

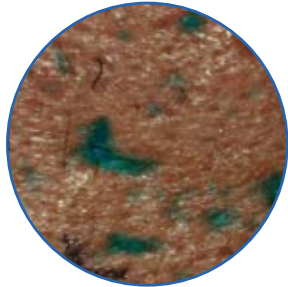
Quantify Change

BEFORE



Acne scars

AFTER



Acne lesion

	●●	○○	
p	11.25	11.25	mm
a	10.57	9.89	mm ²
v>0	2.06	0.47	mm ³
max	0.58	0.17	mm
avgH	0.21	0.05	mm
d	3.92	3.96	mm



MEASURE EFFICACY OVER MULTIPLE VISITS

Obtain **standardized 3D pictures** and measure skin details at one time-point or compare and match baseline to subsequent visits effortlessly.

MEASUREMENT TOOLS

The 3D Track[®], **analysis technology**, enables accurate **measurements of straight**, and **curved lines**, **closing** and **smoothed surfaces** along with a wealth of quantitative measurements such as:

Volume – Depth – Perimeter – Length – Height – Surface – Roughness – Soft measuring tape, geodesic and straight distances

DATA EXPORTS

Support claims and efficacy with **exportable measurement data** to easily compare visits.

In a click, generate jpeg, png images or mp4 video extracts to illustrate claims.